

Utilizzando questo sito acconsenti all'utilizzo di cookie. I cookie possono essere gestiti per mezzo del tuo browser o attraverso le impostazioni del dispositivo.

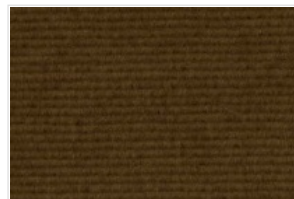
<a href="#">:: Home (/)</a>
<a href="#">01   CONTATTI (/01--Contatti.Html)</a>
<a href="#">01.1   TESSUTI (/011--Tessuti.Html)</a>
<a href="#">01.1B   TENDE FONOASSORBENTI LEGGERE (/011b--Tende-Fonoassorbenti-Leggere.Html)</a>
<a href="#">01.2   POLTRONE (/012--Poltrone.Html)</a>
<a href="#">01.3   SISTEMI E BINARI (/013--Sistemi-E-Binari.Html)</a>
<a href="#">02   Azienda (/02--Azienda.Html)</a>
<a href="#">03   Prodotti + Servizi (/03--Prodotti--Servizi.Html)</a>
<a href="#">04   Clienti (/04--Clienti.Html)</a>
<a href="#">05   Studi Tecnici (/05--Studi-Tecnici.Html)</a>
<a href="#">06   Collaborazioni / Job (/06--Collaborazioni--Job.Html)</a>
<a href="#">07   REFERENZE (/07--Referenze.Html)</a>
<a href="#">08   Collezioni (/08--Collezioni.Html)</a>
<a href="#">09   Offerte (/09--Offerte.Html)</a>
<a href="#">10   Normative (/10--Normative.Html)</a>
<a href="#">11   NEWS (/11--News.Html)</a>
<a href="#">11.1   TEATRoTV (/111--TeatroTv.Html)</a>
<a href="#">12   Link (/12--Link.Html)</a>
<a href="#">14   Compagnie (/14--Compagnie.Html)</a>
<a href="#">15   Wiki Teatro (/15--Wiki-Teatro.Html)</a>
<a href="#">16   CAPITOLATI D'APPALTO (/16--Capitolati-Dappalto.Html)</a>
<a href="#">18   Politica Ambientale (/18--Politica-Ambientale.Html)</a>
<a href="#">19   Foreign Countries (/19--Foreign-Countries.Html)</a>
<a href="#">20   Menu Visuale (/20--Menu-Visuale.Html)</a>

## BiscRoma Fr

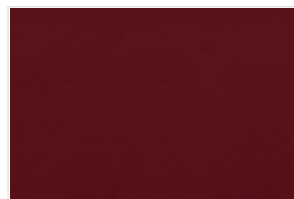
### Velluto ad Alta Resistenza ignifugo classe 1

**Composizione** 100% FIBRA MODACRILICA  
**Ignifugazione** Ignifugo di classe 1 - Lavabile a secco  
**Altezza** cm. 140  
**Peso** gr. 620 al Mtl  
**Solidità alla luce** UNI EN ISO 105 B02:2004 >5  
**Comportamento alla luce** semioscurante, oscurante con fodera  
**Comportamento al suono** buone capacità fonoassorbenti  
**Barriera al suono** \*\*\*\*\*  
**Barriera al suono** con apposita fodera/intermezzo: \*\*\*\*\*  
**Pilling** ISO 12945-2/00 5  
**Degradò del colore** dopo 3.000 giri 5  
**Resistenza** allo scorrimento delle cuciture UNI 9743 >200 N  
**Martindale** UNI EN ISO 12947-2:2000 **60.000** cicli  
**Colori disponibili** 11  
**Personalizzazione** possibile

TORNA ALLO SCAFFALE DEI TESSUTI (/011--tessuti.html)



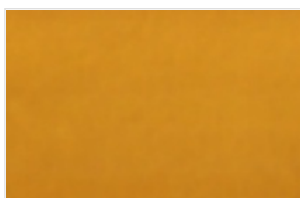
(/uploads/1/0/3/6/10364160/3126296\_orig.jpg)  
08 VELLUTO MARRONE



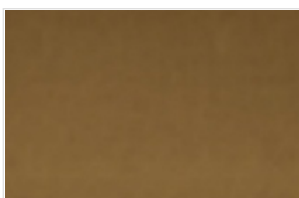
(/uploads/1/0/3/6/10364160/6761427\_orig.jpg)  
05 VELLUTO ROSSO



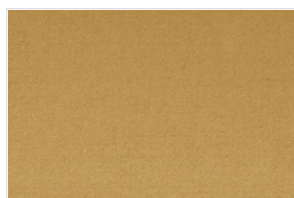
(/uploads/1/0/3/6/10364160/7287434\_orig.jpg)  
06 VELLUTO VERDE



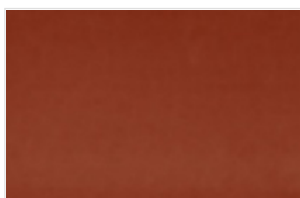
(/uploads/1/0/3/6/10364160/2701374\_orig.jpg)  
07 VELLUTO ORO



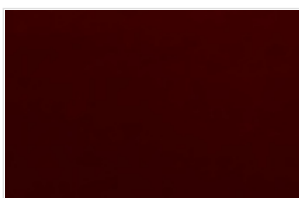
(/uploads/1/0/3/6/10364160/6233152\_orig.jpg)  
11 VELLUTO BEIGE



(/uploads/1/0/3/6/10364160/3206315\_orig.jpg)  
10 VELLUTO GHIACCIO



(/uploads/1/0/3/6/10364160/5947417\_orig.jpg)  
12 VELLUTO ROSA ANTICO



(/uploads/1/0/3/6/10364160/4702389\_orig.jpg)  
13 VELLUTO BORDEAUX



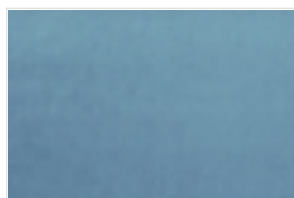
(/uploads/1/0/3/6/10364160/6553539\_orig.jpg)  
04 VELLUTO BLU



(/uploads/1/0/3/6/10364160/2607921\_orig.jpg)  
03 VELLUTO AZZURRO



21 VELLUTO NERO



(/uploads/1/0/3/6/10364160/4057784\_orig.jpg)  
02 VELLUTO CELESTE

