

Fig. 4. Complete system's on-axis curve in same  $2\pi$  chamber, showing effects of driver interference only. Speaker mounting plate of cabinet is flush with inside chamber wall.

Qui sopra: montata a filo dello schermo infinito in camera anecoica.

## THE SOUND FIELD IN HOME LISTENING ROOMS

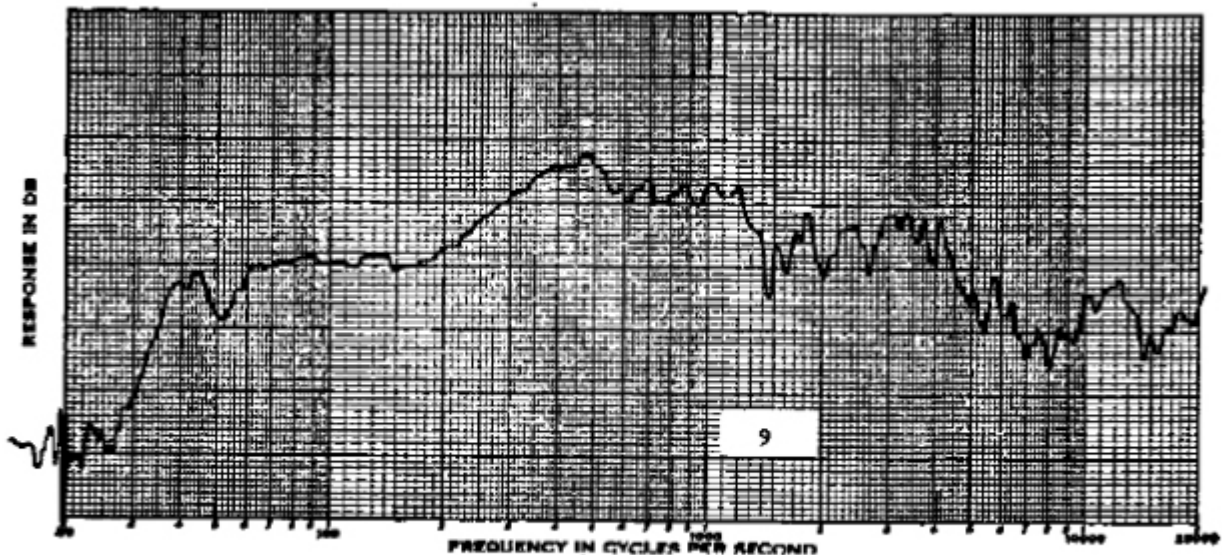


Fig. 9.  $4\pi$  anechoic chamber frequency response curve for same speaker system on axis.

in camera anecoica su spazio intero.

Si nota maggiormente l'effetto della diffrazione ai bordi.