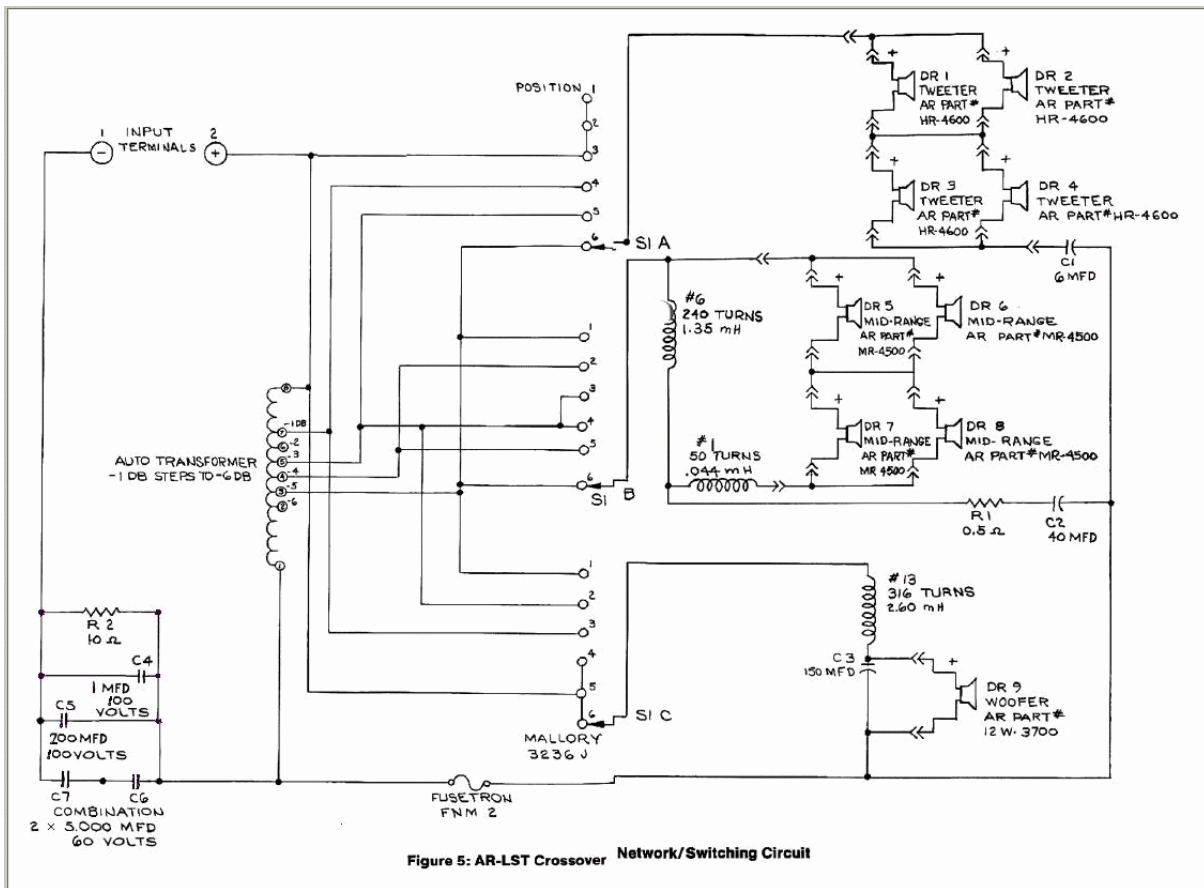
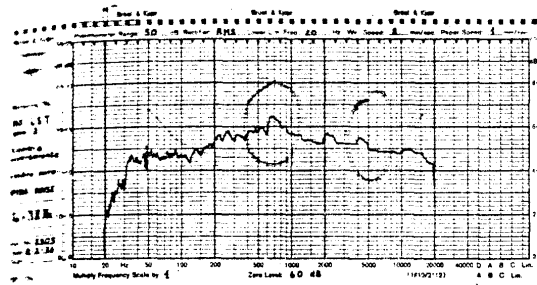
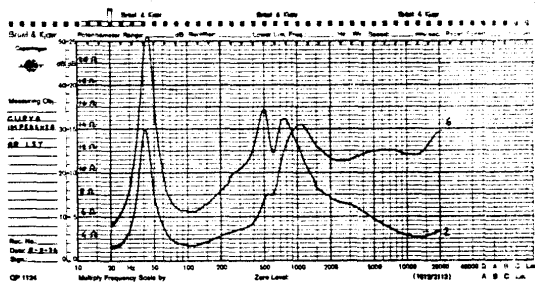


AR LST

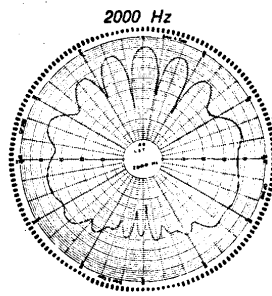
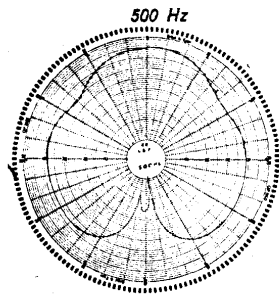




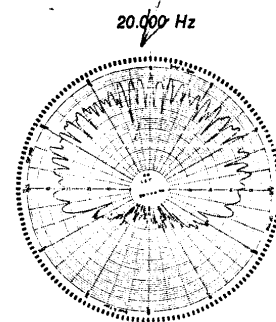
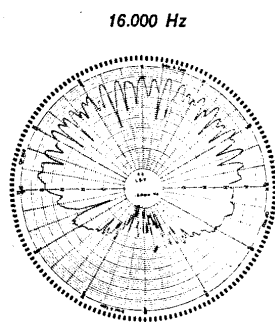
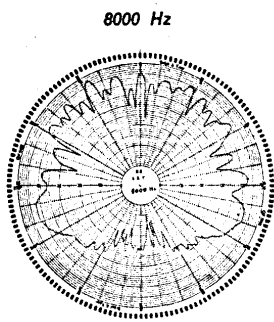
Risposta in camera d'ascolto rilevata con « rumore rosa » attraverso filtri a terzi d'ottava



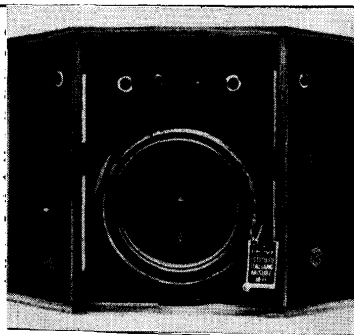
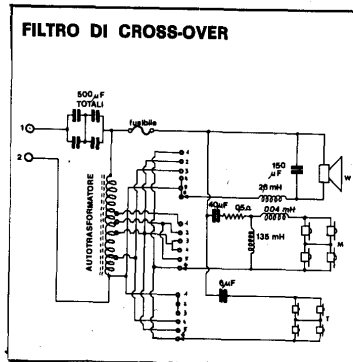
Curva d'impedenza



Diagrammi polari



Risposta ai transitori (tone bursts)



PRO

- Ottima dispersione angolare
- Grande capacità di sonorizzazione
- Ottima corrispondenza tra le caratteristiche dichiarate e quelle rilevate

CONTRO

- Scarsa efficienza.
- Andamento dell'impedenza poco regolare
- Interazioni tra gli altoparlanti che coprono la stessa gamma (diagramma polare irregolare).